

Antrim Eagles Soar!

Letter from the Principal

Dear Parents,

On behalf of the AES faculty and staff, I want to welcome both new and returning families to Antrim Elementary School (AES). I also want to thank you for sending your wonderful children to school. After walking through a largely empty building for most of the summer, it is incredibly exciting to see and hear the students as they reconnect with old friends, meet new friends, and settle into a new classroom with new routines and new grade level content.

I also want to assure you that the staff at AES is committed to providing the very best for each and every student. As the school's vision states:

Antrim Elementary School is a community inspiring all members to grow academically, socially, and emotionally within a safe, caring and nurturing environment. In challenging students and staff toward excellence, we support a collaborative and cooperative school striving for enthusiasm and joy in learning. We are respectful of diversity for individuals and groups, and teach the values of our democratic society. Kindness, respect, honesty, and cooperation are central to our success as a community of learners.

The entire AES staff looks forward to partnering with you to make the 2015-2016 school year a great one! We hope that you share our excitement for the year ahead!

Sincerely,

Ann Allwarden

AES Building Principal

Important Note: Please encourage your child to bring a water bottle to school each day this week. Due to the forecast of hot weather, we will be putting water coolers on the playground during recess times. Thank you!



School Assemblies

All school assemblies will be held on Friday mornings at 9:10am. The staff sincerely hopes that this time provides parents with regular opportunities to come to school and participate in one of AES's long standing traditions—the whole school assembly—where we come together as a school community to share and celebrate our accomplishments and reinforce our core values of kindness, respect, honesty, and cooperation.

Beginning of the year artwork by a few Kindergarten and Grade 2 students.

Antrim Elementary School (AES)

Volume 3, Issue 1

August 31, 2015

Mark your calendars

September 4

Parent Refreshments 8:40-9:10am in multi-purpose room

School Assembly @ 9:10

September 7

Labor Day

September 8-11

AIMSweb Assessments

September 8

PTO Mtg. @ 7pm in AES's Conference Room

September 11

Parent Refreshments 8:40-9:10am in multi-purpose room

School Assembly @ 9:10

September 18

Parent Refreshments 8:40-9:10am in multi-purpose room

School Assembly @ 9:10

September 22

Open House from 5:30 to 6:30pm

September 25

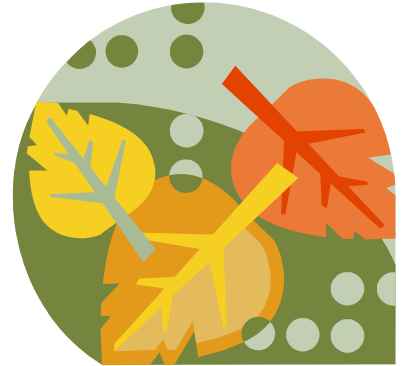
Parent Refreshments 8:40-9:10am in multi-purpose room

School Assembly @ 9:10

Fall Assessments

During the week of September 8th, students in grades K-4 will be taking AIMSweb assessments. Each AIMSweb measure takes only one to four minutes to complete. Later in the fall, during the weeks of October 19th and October 26th, students in grades 1-4 will also take the Measures of Academic Progress™ (MAP) assessment. This is a computer-based assessment. Typically, students take an hour to complete the reading portion and another hour to complete the math portion of this assessment. We administer the math and reading on different days. (First graders wear headphones during the assessment as the test is read aloud to them.)

We give students the AIMSweb and MAP assessments to determine their instructional level for math and reading—and to measure academic growth throughout the school year, as well as from year to year. Furthermore, these assessments are used diagnostically by teachers to decide what skills and knowledge to prioritize when working with a student. Following the administration of AIMSweb and MAP, grade level teams meet to review the results from these assessments. During these meetings teachers analyze each child's performance in order to identify key areas of strength and need. Information gathered from this analysis directly informs the instruction that teachers offer your child. Our goal is to tailor the instruction provided to your child in such a way that it maximizes their levels of learning and achievement.



New Morning Routine

We have changed our morning routine for the 2015-2016 school year. All students should be dropped off at the playground between 8:20 and 8:40. At 8:35 one of the staff members on morning duty will blow a whistle and direct students to line up. On their way to line up, students have been asked to say goodbye to their parents/guardians who are still on the playground. This decision was made after thinking about what is best for students. This new routine allows students and teachers to focus on entering the school building quietly and calmly. It will also allow teachers to focus on supporting students as they get organized for the day ahead—getting things neatly into their locker, making their lunch selection, taking attendance, and beginning their morning meeting.

Parents/Guardians are welcome to stay on the playground during morning recess. If parents/guardians have a reason for being inside the school building, we ask that you enter the school building through the front doors by the office, sign in on the AES Visitor Sheet, and get a visitor's pass. If a visiting adult is in the hallways without a pass, an AES staff member will politely remind the visitor to return to the office to get one. This new routine is to ensure student safety, which is always a top priority for us. The new routine is also in alignment with current district policy. The excerpt below comes from *Policy KI: Visitors in School*:

All persons, other than staff and pupils enrolled in the school, who may come to the school for any reason during the school day are considered visitors and must report and sign in at the school office....Persons wishing to meet with a teacher for the purpose of discussing a particular problem shall do so only at a time when it does not interrupt the normal school program. Persons wishing to make such arrangements may do so by securing an appointment with the teacher through the office of the Principal or by direct contact with the teacher.

No person shall visit a school without first reporting to the office of the Principal as to the purpose and place of the visit.

2015-2016 Specials Schedule for AES

Dates	Week	Specials for Grossi, Donovan, Hartnett, Colby, and Bastarache	Specials for Stacy, Zawacki, Lawler, Morris, and Woods
8/27-9/4	1	Music	PE
9/8-9/11	2	PE	Music
9/14-9/18	3	Health	Library/Media
9/21-9/25	4	Library/Media	Health
9/28-10/2	5	Art	PE
10/5-10/8	6	PE	Music
10/13-10/16	1	Music	PE
10/19-10/23	2	PE	Music
10/26-10/30	3	Health	Library/Media
11/2-11/6	4	Library/Media	Health
11/9-11/13	5	Art	PE
11/16-11/20	6	PE	Music
11/30-12/4	1	Music	PE
12/7-12/11	2	PE	Music
12/14-12/18	3	Health	Library/Media
1/4-1/8	4	Library/Media	Health
1/11-1/15	5	Art	PE
1/19-1/22	6	PE	Music
1/25-1/29	1	Music	PE
2/1-2/5	2	PE	Music
2/8-2/12	3	Health	Library/Media
2/15-2/19	4	Library/Media	Health
2/29-3/4	5	Art	PE
3/8-3/11	6	PE	Music
3/14-3/18	1	Music	PE
3/21-3/25	2	PE	Music
3/28-4/1	3	Health	Library/Media
4/4-4/8	4	Library/Media	Health
4/11-4/15	5	Art	PE
4/25-4/29	6	PE	Music
5/2-5/6	1	Music	PE
5/9-5/13	2	PE	Music
5/16-5/20	3	Health	Library/Media
5/23-5/27	4	Library/Media	Health
5/31-6/3	5	Art	PE
6/6-6/10	6	PE	Music
6/13-6/14 + snow	1	Music	PE